

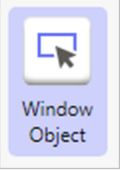
Window Object



This function is one of Action Operation. You can find the movie in [ARGOS video tutorial](#).

Need help?

Technical contact to tech@argos-labs.com

 Window Object	Window Object <ul style="list-style-type: none">• A bot Navigation operation.• The Window Object operation is a highly reliable bot-navigation operation. It uses Xpath to identify and manipulate a unique object in Windows apps.• It is particularly useful when short-cut keys and other reliable navigating methods are not easily available.
---	--

May you search all operations,

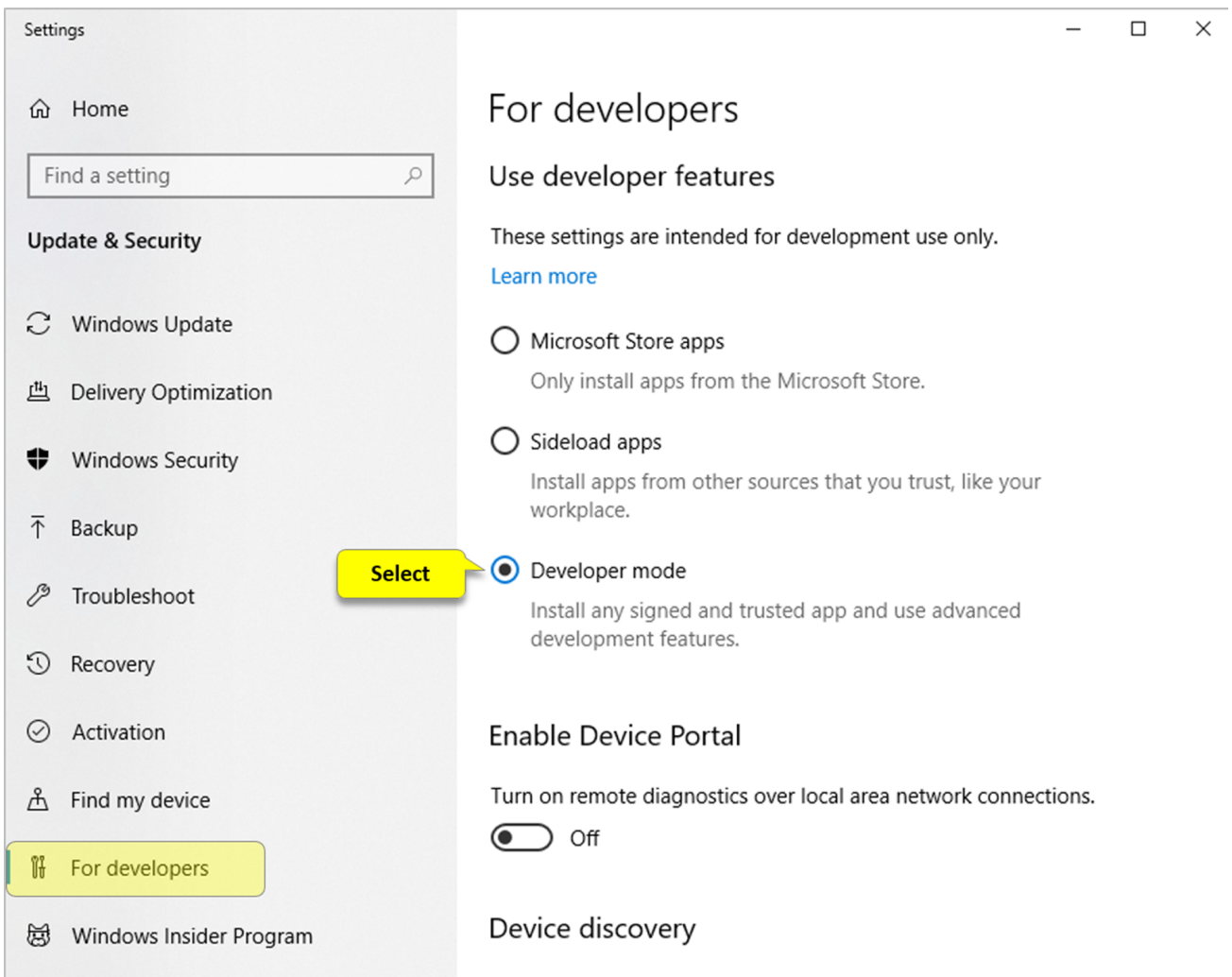
- [Verifications](#)
- [System Calls](#)
- [Interactives](#)
- [Plugins](#)

Contents

1. [Developer mode must be turned ON with your Windows for both STU and PAM.](#)
2. [No need to take Screenshot.](#)
3. [Just Click on the Window+Arrow icon the STU hides to the background.](#)
4. [Move your cursor to the object and patiently WAIT until the Xpath capture indicator turns BLUE then Click!](#)
5. [Wildcard and other standard features are supported with STU and PAM.](#)

1. Developer mode must be turned ON with your Windows for both STU and PAM.

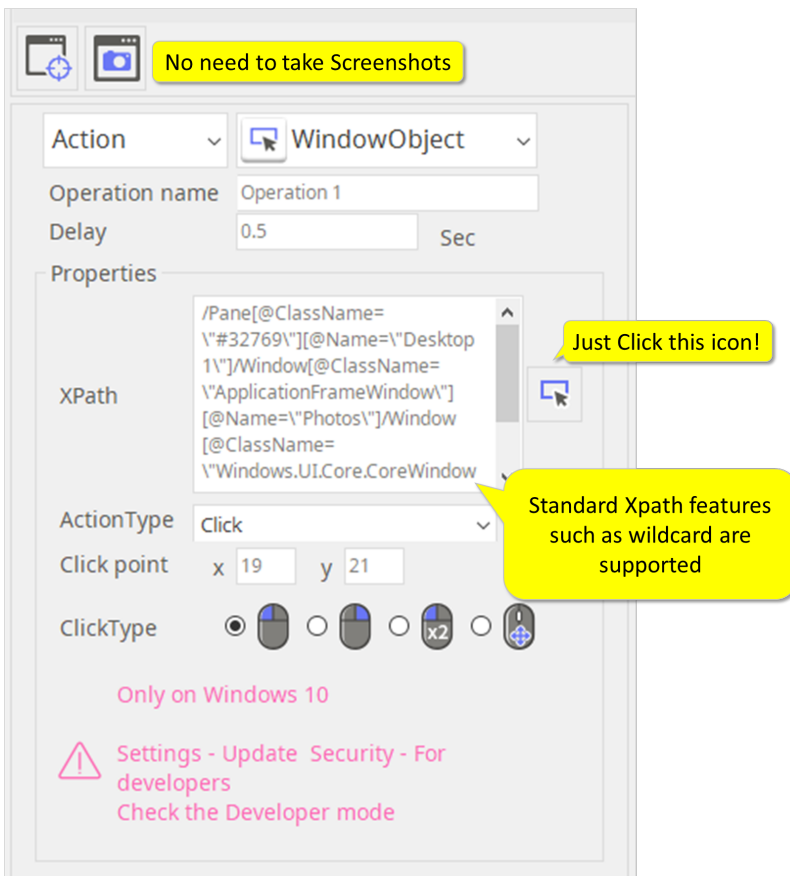
In order to user Window Object operation, you must turn on the Developer mode in your Windows.



2. No need to take Screenshot.

Although the Screenshot buttons are there and functional, the Window Object operation does not use any information from the screen images.

3. Just Click on the Window+Arrow icon the STU hides to the background.



4. Move your cursor to the object and patiently WAIT until the Xpath capture indicator turns BLUE then Click!



5. Wildcard and other standard features are supported with STU and PAM.

Properties

XPath

\Shell_TrayWnd\[@Name=\Taskbar\]/ToolBar
[@ClassName=\MSTaskListWClass\][@Name=\Running applications\]/Button
[@Name=\PowerPoint - 1 running window\][starts-with

ActionType

Click

For more information about the standard Xpath features, please visit

https://www.w3schools.com/xml/xpath_syntax.asp

w3schools.com

HTML

CSS

JAVASCRIPT

SQL

PHP

BOOTSTRAP

HOW TO

PYTHON

W3.CSS

JQUERY

XML

MORE

AJAX PHP

AJAX ASP

AJAX Database

AJAX Applications

AJAX Examples

XML DOM

DOM Introduction

DOM Nodes

DOM Accessing

DOM Node Info

DOM Node List

DOM Traversing

DOM Navigating

DOM Get Values

DOM Change Nodes

DOM Remove Nodes

DOM Replace Nodes

DOM Create Nodes

DOM Add Nodes

DOM Clone Nodes

DOM Examples

XPath Tutorial

XPath Introduction

XPath Nodes

XPath Syntax

XPath Axes

XPath Operators

XPath Syntax

< Previous

XPath uses path expressions to select nodes or node-sets in an XML document. The node is selected by following a

The XML Example Document

We will use the following XML document in the examples below.

```

<?xml version="1.0" encoding="UTF-8"?>

<bookstore>

<book>
  <title lang="en">Harry Potter</title>
  <price>29.99</price>
</book>

<book>
  <title lang="en">Learning XML</title>
  <price>39.95</price>

```

All Actions

- [Call Function](#)
- [Case Action](#)
- [Clear IE Cache](#)
- [Click and Focus](#)
- [Delay](#)
- [End of Scenario](#)
- [End of Step](#)
- [Excel Basics](#)
- [Execute Scenario](#)
- [Goto](#)
- [HTML Action](#)
- [Java Script](#)
- [Locate Image](#)
- [OCR](#)
- [Open Browser](#)
- [Repeat](#)
- [Scroll](#)
- [Select Window](#)
- [Send Email](#)
- [Set Variables](#)
- [Shortcut Keys](#)
- [Text Input](#)
- [Window Object](#)