

# Can someone else take over control of my scenario

Need help?

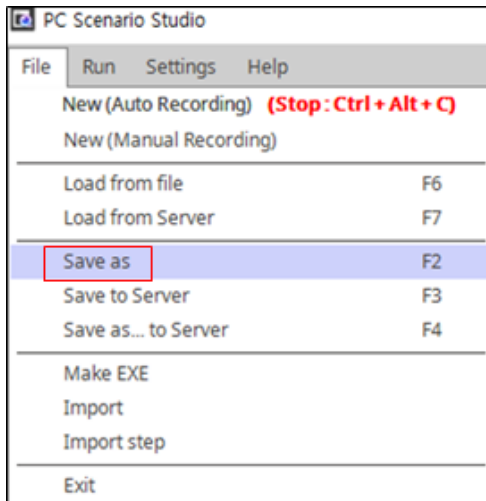
**Q.** Can someone else take over control of my scenario? How can I share my scenario?

**A.** Please save your scenario with "save as" located in file menu, you can share your scenario with scenario.bot file. But to use bot file on other persons PC, STU must be installed in the other persons PC.

**Technical** contact to [tech@argos-labs.com](mailto:tech@argos-labs.com)

**May you search all documents,**

- [RPA+ Documents](#)



## STU

- Q. Is it safe to ignore 'Windows Protected your PC' message when installing 'ARGOS RPA+'?
- Q. Where is the result of OCR stored?
- Q. Why does Text Input not work even when the App windows is showing in the foremost layer on the screen?
- Q. How does variables in Plugins work?
- Q. STU crashed before I saved the bot. Can I recover it?
- Q. How to change the default save path?
- Q. Do OCR Library's Google Vision API and Tesseract have different usage criteria?
- Q. What is 'Duration' in Shortcut keys?
- Q. When using Clipping image, what is '0' box?
- Q. When add new PAM on CHIEF, how to find the MAC address?
- Q. What should I do if I don't know the column name in CSV entry of the result value in case of result of the plug-in?
- Q. How can I use repeat inside of 'Repeat' action?
- Q. The scenario isn't working Because of App title has been changed, what should I do?
- Q. Do I have to use 'Repeat' to check one word listed in String Manipulation?
- Q. What should I do in case of Image match fails?
- Q. How can I set 'Image Match' if the setting image changes after setting button?
- Q. Java script, HTML action isn't working on my browser, is there a reason for this matter?

- Q. I often use 'Send Email' a lot but it's annoying that I've to enter my mail info every time.
- Q. How can I change all the time out value at once?
- Q. What is the meaning of line in 'Scroll'?
- Q. I want to see the pop-up again after checking "Do not show next" in User Params.
- Q. To use 'Window Object', I need to turn on developer mode. Where do I turn it on?
- Q. Is there a way to see the last test run results of my scenario in STU?
- Q. PAM and STU did not work because an error occurred. What should I do?
- Q. Can someone else take over control of my scenario? How can I share my scenario?
- Q. I tried to type in my scenario with Text input item but some reason it's not typing anything. What should I check to type in my scenario?
- Q. Which operation can use the variable specified in Set Variable Operation?
- Q. How to set 'drag' with 'Locate Image'?
- Q. When I wanted to download ARGOS RPA, I've found All-in-One, STU and PAM download button. Which one do I have to download?
- Q. It doesn't seem to be recording special keys such as Enter, ESC or any other keys during Auto-Recording system.
- Q. I'd like to run some test on different PC which has PAM installed already. How can I change my PAM information?
- Q. How can I start chrome incognito window. How can I do it?
- Q. How can I close all the automatic popups of URL homepage? I want to close all the automatic popups of URL homepage  
How can I do it?
- Q. Due to unexpected scenario failure, my browser remained open and process were on processing. Even though my next scenario is schedule to run.
- Q. Due to Cache data, sometimes it causes the scenario failure. Can I delete the cache automatically before the scenario starts?
- Q. I'd like to check my data where data time is time I want.
- Q. I input wrong key in Shortcut Keys but I cannot delete it. How to modify it?
- Q. I used my Google account in send E-mail operation but it doesn't seem to be working. Why?
- Q. I realized my scenario was very similar with previous ones. So I'd like to reuse part of the scenario . How to bring the step?