
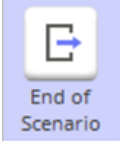


End of Scenario

This function is one of Action Operation. You can find the movie in [ARGOS RPA+ video tutorial](#).

Need help?

Technical contact to tech@argos-labs.com

End of Step	End of Scenario
 End of Step	 End of Scenario

May you search all operations,

- [Verifications](#)
- [System Calls](#)
- [Interactives](#)
- [Plugins](#)

Use these tools for partial testing!

Primary Features

- End Step ends the step and moves on to the following step.
- End Scenario terminates the scenario.
- They can be used in **Conditional Branching** to isolate operations.
- They can be used for testing part(s) of the scenario by disabling the operations before, after, and in-between.

- Example of using these tools for Conditional Branching.

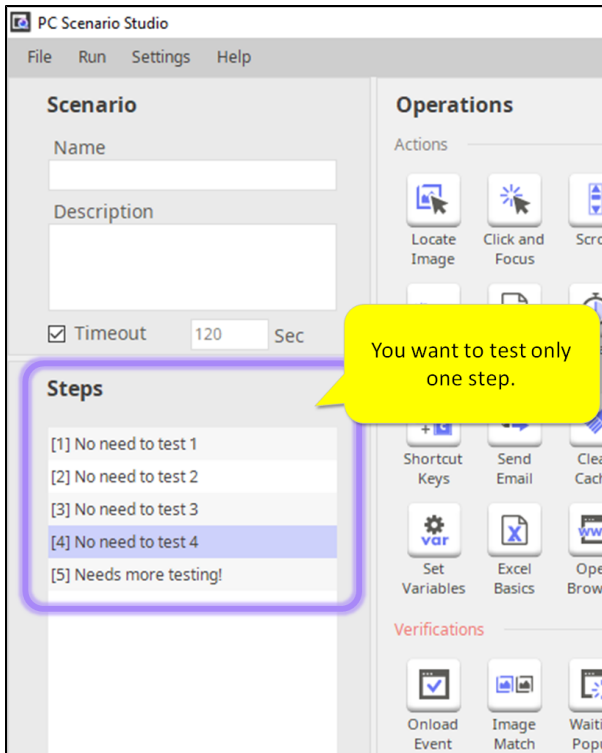
The screenshot displays a bot configuration interface. On the left, a vertical list of operations is shown: 1. CompareValue (Operation 3), 2. TextInput (Operation 4), 3. End of Step (Operation 5), 4. TextInput (Operation 6), and 5. End of Scenario (Operation 7). The 'CompareValue' operation is highlighted in blue. A red arrow points from this operation to a yellow callout box on the right that reads: "In this example, Compare Value is used to set up a conditional branching of the automation."

Below the list, a large yellow callout box contains the following text: "If the comparison result is true, the bot will execute operation 3 and then move on to the next step. If the comparison yields false, the bot will execute operation 4 and ends the scenario".

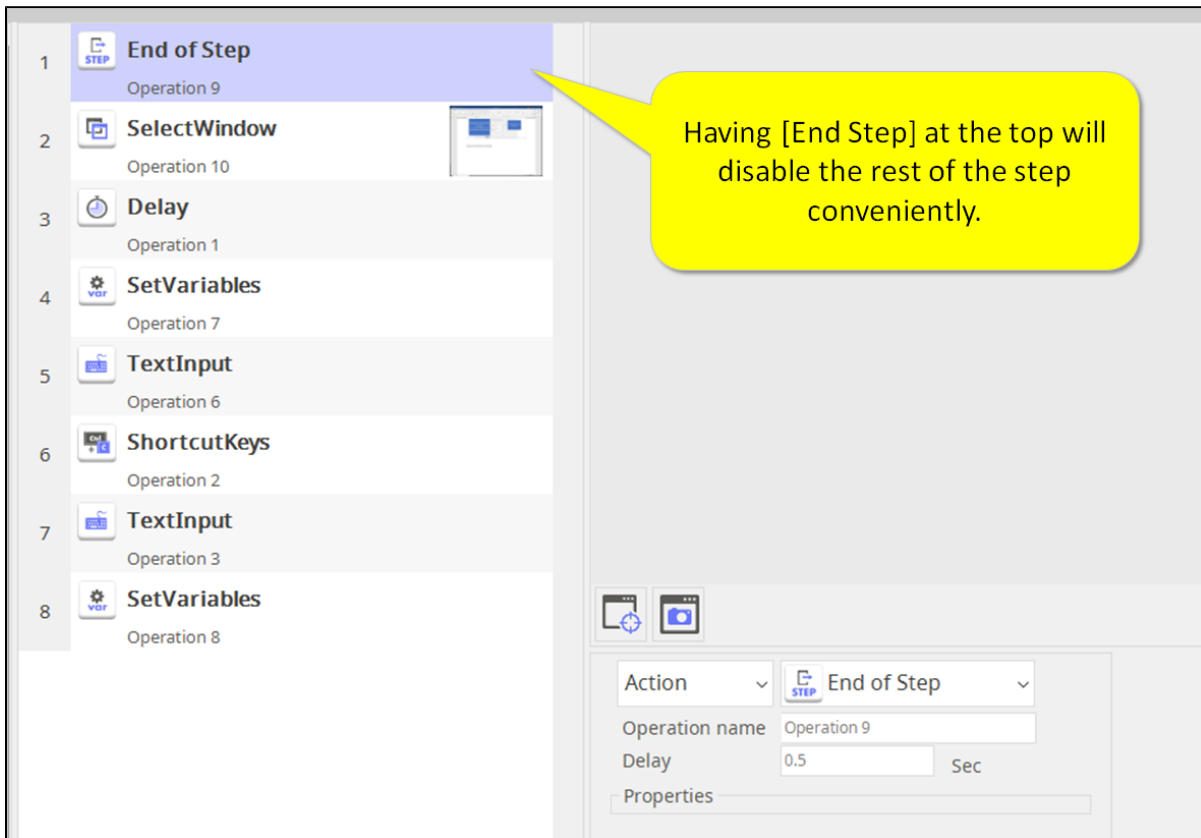
The main area of the interface shows the configuration for the selected 'CompareValue' operation. It includes a 'Verification' dropdown set to 'CompareValue', an 'Operation name' field with 'Operation 3', and a 'Properties' section with a comparison expression: `{{Global.second}} == {{Global.second}}`. The 'Result handler' section is configured with 'True' set to 'MoveOn' and 'False' set to 'JumpToOperation', with the 'Operation number' field set to '4'. A yellow callout box points to this section with the text: "Conditional Branching is defined here".

At the bottom of the interface, there are control buttons: a play button, a plus sign, and a trash icon.

- Example of using End Step for partial testing.
When you have many steps but there is only one you want to test.



- Place End Step at the top of all the other steps.



All Actions

- Clear Cache
- Click and Focus
- Delay
- End of Scenario
- End of Step
- Excel Basics
- Goto
- HTML Action
- Java Script
- Locate Image
- OCR
- Open Browser
- Repeat
- Scroll
- Select Window
- Send Email
- Set Variables
- Shortcut Keys
- Text Input
- Window Object